

# Compact, Real-Time Logger for Long Routes

## Sentry 500 GPS Logger

### Reliable, Long-life GPS logger

The Sentry 500 long-life GPS logger is a reliable tool for monitoring temperature, light, pressure, motion and shock, in real-time.

### Key Features

The Sentry 500 operates on GSM/GPRS/EDGE AT&T global network. It can be charged via a USB cable or the sentry charger unit. It has a reporting interval range of 120 seconds to 30 days (720 hours) and monitors drugs across a range of -20°C to +60°C. The Sentry 500 has an IATA approved Li Ion battery.

### Follow drugs in real-time over short and long routes

The Sentry 500 long-life GPS logger is available with standard or extended life batteries, so you can ensure drugs are monitored in real-time on longer journeys. The water and tamper proof logger measures a host of different factors so you can monitor your most sensitive drugs, such as biometrics, and follow and analyze shipments mid-transit.

### The world's leading temperature management solution

When you use TSS loggers you also get access to our cloud temperature management software. It delivers big data-driven analytics, and documents end-to-end visibility of drugs as they move through the supply chain. It's used by leading life science companies to reduce distribution costs, meet compliance and deliver drugs safely and sustainably to patients.



#### TSS AB

Visiting Address  
Mallslingan 20A,  
187 66 Täby, Sweden

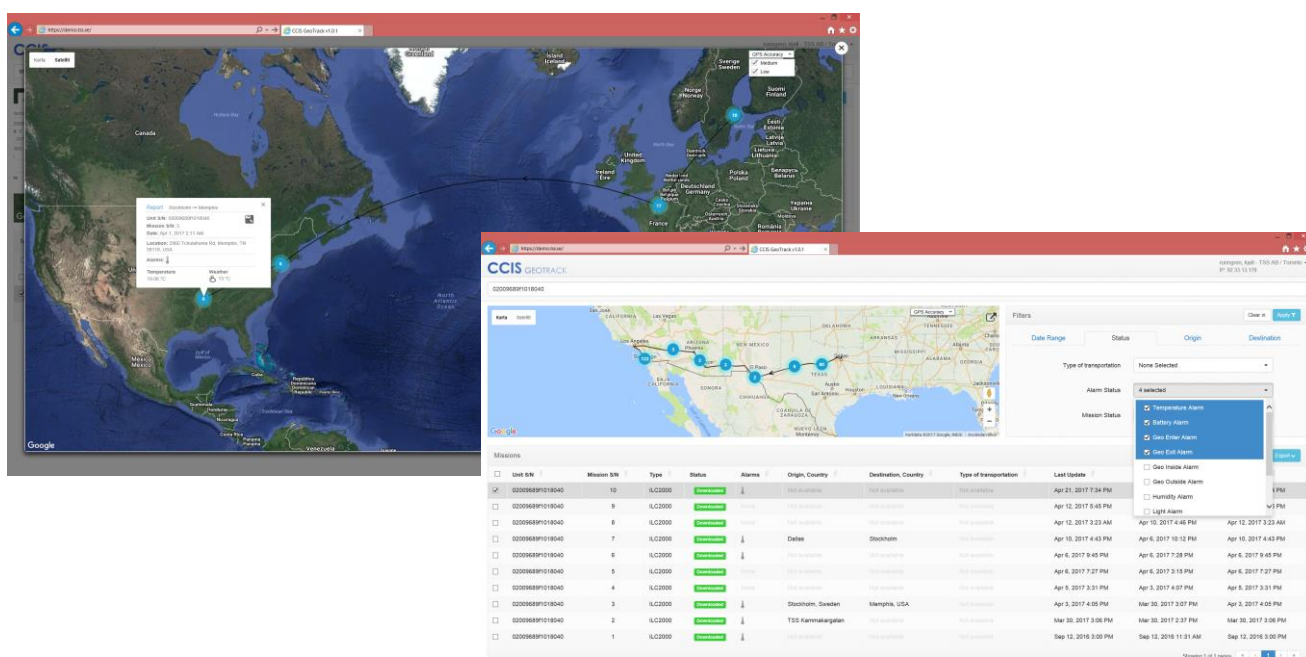
Post Address  
P.O. Box 7296,  
187 14 Täby, Sweden

+46 (0)8 630 0606  
customer.service@tss.se

www.tss.se

## SENTRY 500 FEATURES

Temperature Range	-20°C to +60°C
Temperature Accuracy	± 2.0 C
Sample Rate	2 min to 255 min
Battery Type	Li-Ion 19.3 Wh
Battery Lifetime:	3-30 Days Dependent on Report / Alert Frequency
Dimensions:	94 mm x 49 mm x 36 mm



## About TSS

TSS is a world-leading supplier of temperature monitoring solutions. For the past 20 years we have been helping life science companies to ensure drugs are safe on delivery. Our cloud analytics solution has been developed together with world-leading pharmaceutical companies and is a key component of a risk-based approach to managing the supply chain.

**TSS AB**  
 Visiting Address  
 Mallslingan 20A,  
 187 66 Täby, Sweden

Post Address  
 P.O. Box 7296,  
 187 14 Täby, Sweden

+46 (0)8 630 0606  
 customer.service@tss.se

www.tss.se

